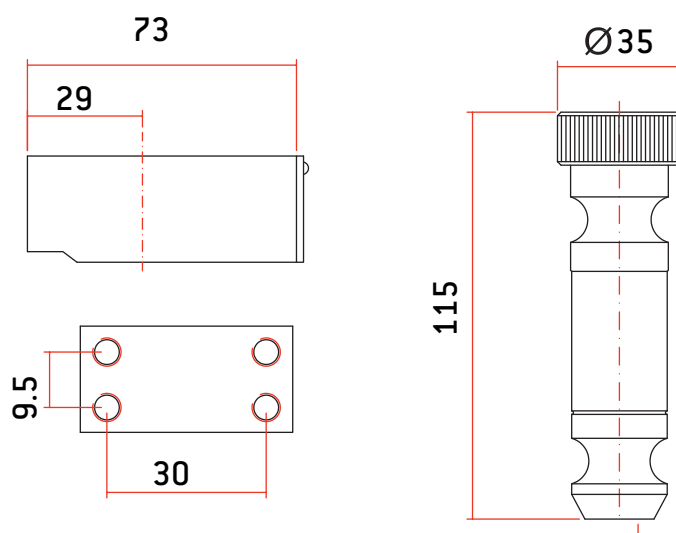


## SHUTTER LOCKS: SWING AND SLIDING FLOOR

### Model CP10

- Stainless steel body (AISI 303)
- Stainless steel cylinder (AISI 303)
- Stainless steel rod (AISI 303)
- CP10: Key opening and locking



MODEL	CODE	WEIGHT (g)	KEY MOD. TS
CP10	AACS1013	1.950	2
CP10 HEAD	AACZ0026	1.442	2