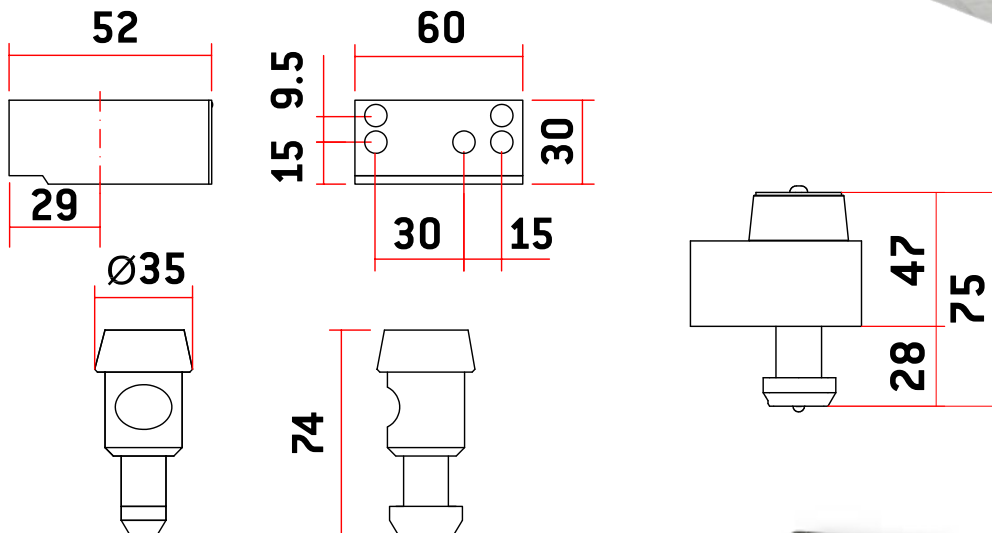
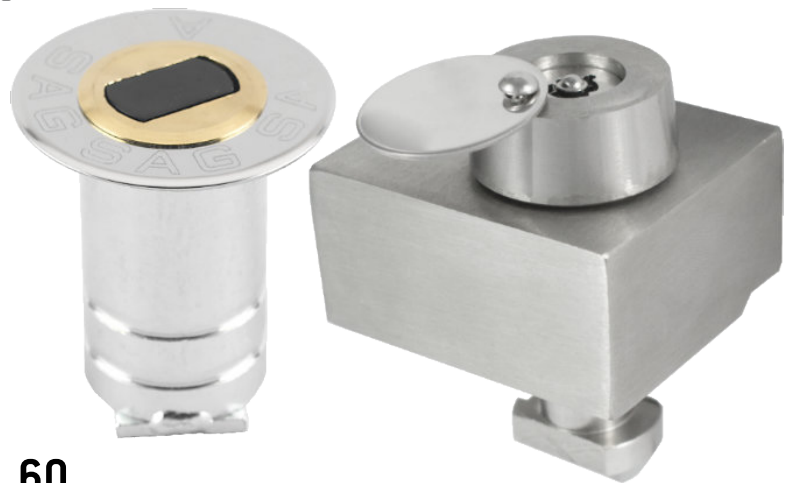


SHUTTER LOCKS: ROLLER FLOOR

Model CP4N

- Stainless steel body (AISI 303)
- Stainless steel cylinder and keys (AISI 303)
- CP4: Key opening and locking



MODEL	CODE	WEIGHT (g)	KEY MOD. TS
CP4N	AACS0044	1.896	2
CP4N HEAD	AACZ0043	1.388	2

