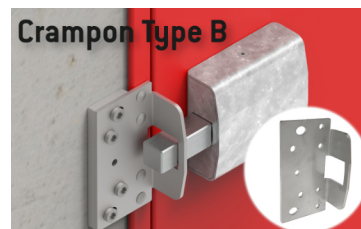
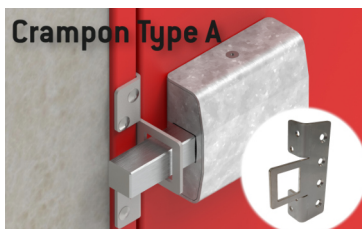
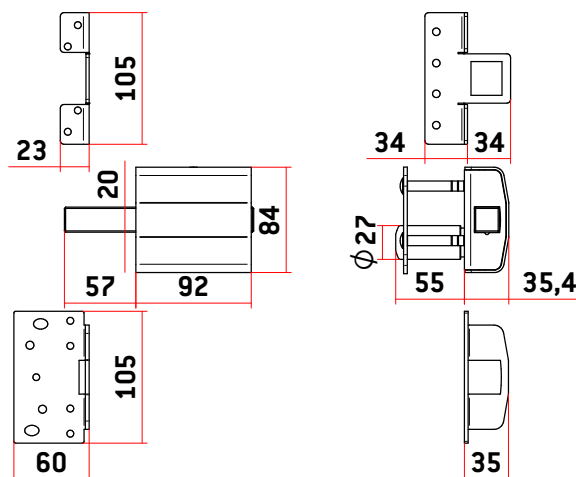
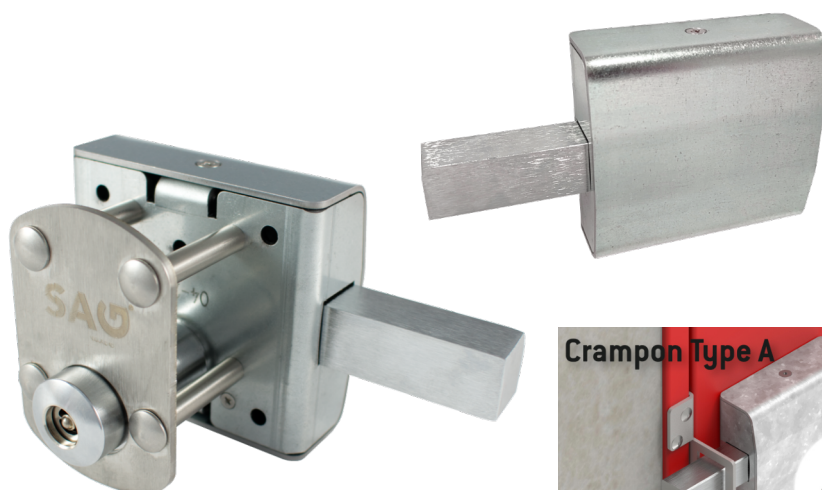




LOCKS

Model CTR · ETR40 · ETR50 (Lock for storage room)

- Galvanized steel base plate and housing.
- Chrome Iron pin
- AISI 304 stainless steel crampon and mechanisms.
- Exterior key opening only
- CTR: Stainless Steel Cilinder and Keys (AISI 303)
- ETR40: The Insert of KABA is not included
- ETR50: KES0 cylinder 8000SΩ MASTER (ref. 81.J9E) or 8000SΩ PREMIUM (ref. 81.K9E). Is not included



MODEL	CODE	WEIGHT (g)	CYLINDER TYPE
CTR + A	AACP0222	1.640	 Mod. TS 3 keys
CTR + B	AACP0226	1.720	 Mod. TS 3 keys
ETR40 + A	AACP0224	1.640	NOT INCLUDED
ETR40 + B	AACP0227	1.720	NOT INCLUDED
ETR50 + A	AACP0225	1.640	NOT INCLUDED
ETR50 + B	AACP0228	1.720	NOT INCLUDED
Crampon Type A	AACP0232	100	
Crampon Type B	AACP0233	180	

* Note: Please contact SAG Seguridad for custom-made pins or cylinder lengths over 55mm, such as 65-75-85-95mm.